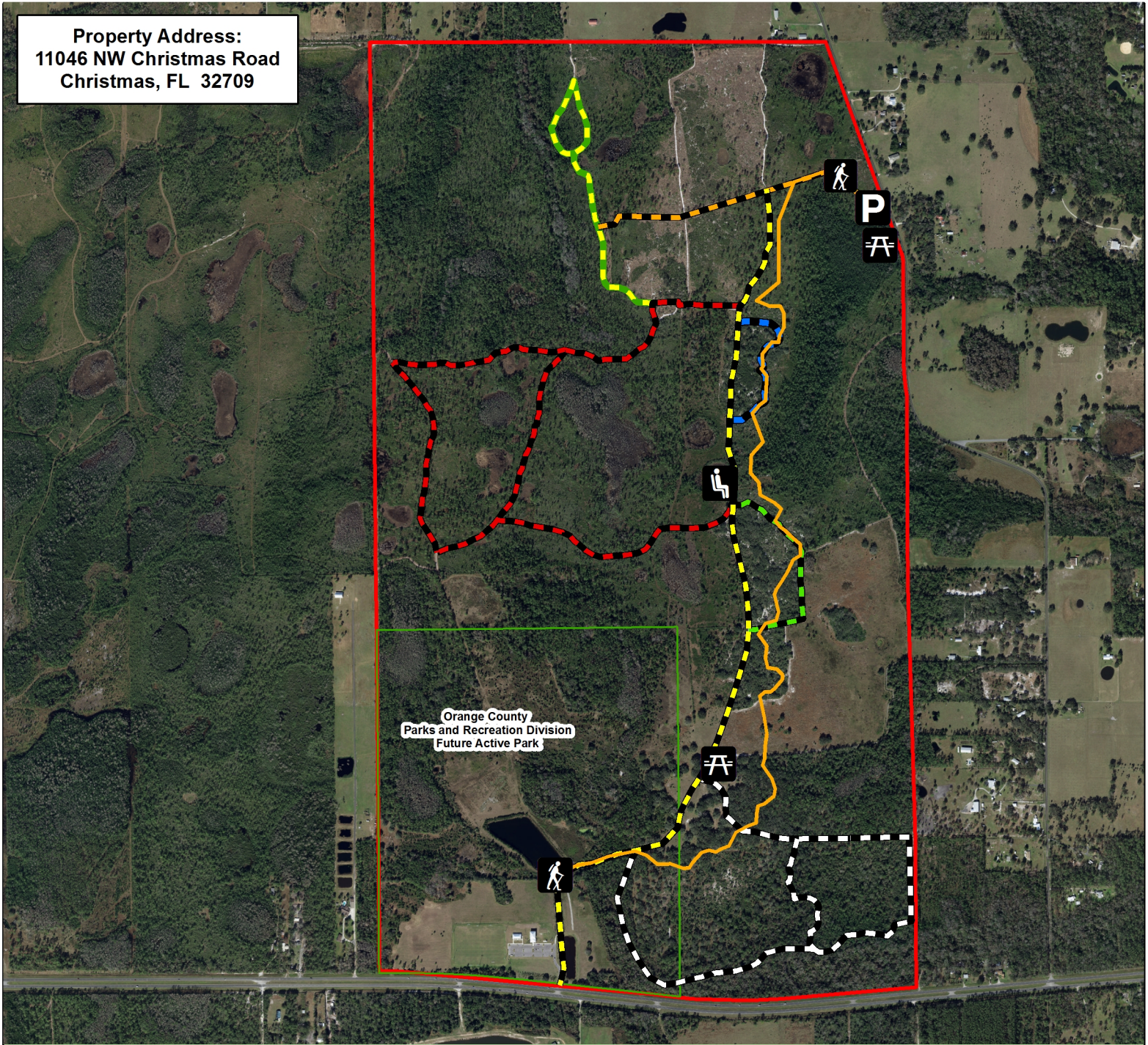
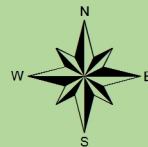
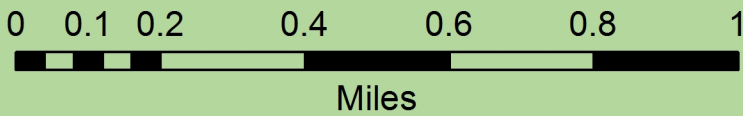


Property Address:
 11046 NW Christmas Road
 Christmas, FL 32709



Trails

- Florida National Scenic Trail - 1.9 miles (Moderate-Hiking Only)
- Blue Trail - 0.3 miles - (Easy-Hiking Only)
- Green Trail - 0.4 miles - (Easy-Hiking Only)
- Green/Yellow Trail - 0.7 miles (Easy)
- Orange Trail - 0.6 miles (Easy)
- White Trail - 1.7 miles (Moderate)
- Red Trail - 2.2 miles (Difficult-Seasonally Flooded)
- Yellow Trail - 1.7 miles (Moderate)



Legend

- Trailhead
- Parking Area
- Picnic Area
- Bench

Orange County Parks and Recreation Division Future Active Park

Savage/Christmas Creek Preserve - 1280 acres



Savage/Christmas Creek Preserve Trail Map

